

Power Photo

Power Photo Software

This Power Photo Software can let you review the photos stored on a Photo CD Disc, edit and save the photos by using Windows Clipboard or by exporting them to files in standard file formats, such as TIFF (Tagged Image File Format) and EPS (Encapsulated PostScript).

How to

- [1. Look at all the photos on a Photot CD disc.](#)
- [2. See an enlargement of photos in photo window.](#)
- [3. Load photos directly from the Photo CD disc.](#)
- [4. Crop a photo in the photo window.](#)
- [5. Edit Photo.](#)
- [6. Saving edit.](#)
- [7. End a session](#)

What insides ...

- [1. File Menu.](#)
- [2. Edit Menu.](#)
- [3. Color Menu.](#)
- [4. Rotation Menu.](#)
- [5. Sizing Menu.](#)
- [6. Window Menu.](#)

What is ...

- [1. Overview Windows.](#)
- [2. Photos Windows.](#)
- [3. Current Thumbnail.](#)

Look at all photos

1. Choose File/Open Overview, and confirm your CD-ROM drive designation.
2. Click OK to load the disc. A overview window is displayed on the screen, which shows versions of all the photos on your Photo CD disc.
3. Choose File/Get Info for getting information about the Photo CD disc and the individual photos. The information is provided by the photofinisher.

See also

[Direct load photo](#)

[Current Thumbnail](#)

Direct load photo

To load photo directly from the Photo CD disc into a photo window without opening a overview window:

1. Specify the drive you want to load.
2. Click a photo filename from filename listbox.
3. Click OK button to load.
4. You can also double-click a photo filename to load.
5. When you select a photo, you can enable the preview check box to see a overview of a photo before you load it.

Current Thumbnail

A thumbnail with red rectangle around means the current thumbnail. With current thumbnail, you can:

- n 1. Navigate all the thumbnails in the overview window with arrow key.
- n 2. Press enter key or double click to view the enlargement of current thumbnail.
- n 3. Press space bar to toggle the current thumbnail for later export.
- n 4. Press CTRL+SPACE to toggle multiple thumbnail.
- n 5. View the thumbnail information from menu File / Get information

See enlargement of photos

1. Double click the photo on the overview window, and a image window opens.
2. Or, choose File/Open Photo, A photo window opens.

Cropping a photo

1. Load a photo.
2. Move the mouse to the upper left corner of crop region on the photo window, hold the left mouse button down.
3. drag the dash rectangle to the desired location for cropping a photo.
4. Release left mouse button, a cropping region of photo is done.
5. To undo your most recent crop action, choose Edit/Undo Crop. You can undo all cropping on a given photo.

Edit photos

For editing photos, Power Photo Software provides series of functions to working on.

- n 1. Colors Menu: changes the color range (palette) used to display or export the currently selected photos.
- n 2. Sizing Menu: changes the resolution, or size in pixels, to display or export the current selection.
- n 3. Rotation Menu: rotates the current selection 90 degrees clockwise or counterclockwise, produces its mirror image, or flips it upside-down.

For cropping tool, please refer to Crop photos in the photo window.

Note: The changes you make with menus override the defaults established in File/Preferences and determine the format used to display the currently selected photos. These settings also determine the format in which the currently selected photos are written to the Clipboard if you choose Edit/Copy or export the photos to a files if you choose File Export.

The cropping changes that you make determine the format. None of these changes alters your Photo CD disc in any way; they only apply to copies of the photos in memory.

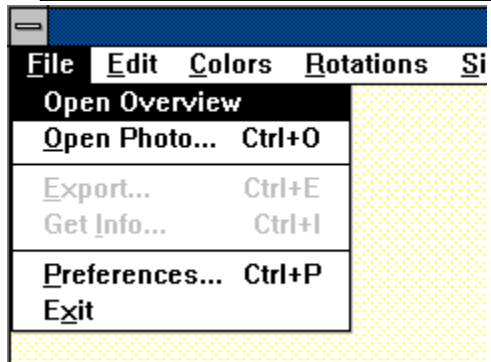
Save editing

Copy the photo to the Clipboard by choosing Edit Copy and then paste it into another application. Power Photo Software can paste the photo as a device-independent bitmap, a bitmap.
Note: Some programs may not be able to accept any of these formats.

End a session

Choose File Exit to exit. Don't forget to save your edits to the Clipboard before you exit.

File Menu



Content of the File Menu

You can use the File menu to:

- [1. Open Overview : open Overview and photo windows.](#)
- [2. Load Photo : load photo from the Photo CD disc.](#)
- [3. Export : export photos to a standard file type.](#)
- [4. Get Info : display creation-time information about the current Photo CD disc.](#)
- [5. Preferences : specify default settings for displaying and exporting photos.](#)
- [6. Exit.](#)

Open Overview Window

Reads into memory the photos on the Photo CD disc in the drive that you specify and displays the photos in a overview window using the colors (palette) and image size in pixels (resolution) specified with File/Preferences.

Specify the drive that contains the Photo CD disc you want to load.

To continue with the load, click OK. An indicator in a dialog box shows you what percentage of the load has completed as the operation progresses.

When the load finishes, a overview window shows all the photos on the Photo CD disc.

Load Photo

Reads one or more photos from a Photo CD disc into memory and displays each in a photo window using the default colors (palette) and default image size in pixels (resolution) specified with the File/Preferences menu command.

First, specify the drive that contains the Photo CD disc you want to load. A list box displays the names of the photos stored on that Photo CD disc.

Select a single photo by clicking. If you select the Preview check box, you can see a miniature version of one selected photo in the preview box.

To continue with the load, click OK. An indicator in a dialog box shows you what percentage of the load has completed as the operation progresses.

Load Selected Photo

Displays the photo(s) that you have selected from the active Overview Window in a Photo Window (in individual photo windows) in the default colors and default size that you have specified with File/Preferences or the Colors and Size menus.

Export

Saves the currently selected photo(s) in the file(s) of the format you specify. Power Photo Software exports photo(s) using the current settings for color range (palette), size (resolution), and rotation for the selected photo(s). You can change the settings for color range and image size in the select format dialog box. File/Export is unavailable when there is no photo selected or no photo displayed.

When you choose this command, the Export Path dialog box displays on the screen, you have to specify the output path. Then the Select Format dialog box is displayed, notifying you to select the Format, Size, and Colors in which you want the photo(s) to be stored. The following graphic file formats are available for export:

Extension	Format
BMP	Windows device-independent bitmap
EPS	Encapsulated PostScript
PCX	PC Paintbrush
RIF	Resource Interchange File Format
TIF	Tagged Image File Format
WMF	Windows Metafile Format

When exporting multiple photos, each photo is named with a sequence number corresponding to the photo number and using the extension that corresponds to the export format.

Get Information

Displays creation-time information about the currently selected photo. This information is stamped on the Photo CD disc by the photofinisher.

The Disc Information group box includes:

- n Serial Number for the disc.
- n Creation Time shows the first time the Photo CD disc was written.
- n Last Modification shows the most recent addition to the Photo CD disc.
- n Number of images currently stored on the Photo CD disc.
- n Number of sessions shows the number of times the Photo CD disc has been written on by the photofinisher.

The Photo Information group box includes:

- n Scan Time when the photo was written onto the Photo CD disc.
- n Media Id shows the source of the image.
- n Media Type shows the film type.
- n Photofinisher shows the name of the firm that processed the image from film.

File/Get Info is unavailable until you load a Photo CD disc.

Preferences

The Preferences command in the File menu allows you to alter some default settings for overview windows, photo defaults.

You can change the default size and palette for both overview and photo windows. These defaults control how photos are displayed, as well as how they are exported.

Overview Window specifications include:

- n Size: Specifies the format to display photos in overview windows. This setting affects only the overview appearance. The larger the format you select, the larger the photos display in the overview window.
- n Palette: Sets the default palette. This setting affects only the overview window appearance. You can change to a smaller palette for a different visual effect and to save time loading images. Initially, the default palette is maximum number of colors your monitor can display.
- n Changes to overview window specifications take effect only when the next overview window is loaded.

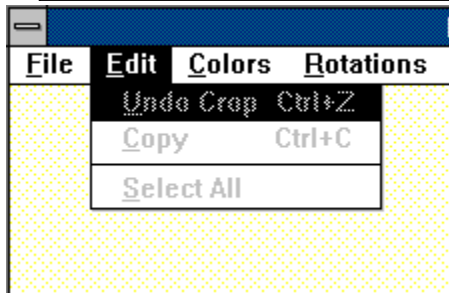
The Photo Defaults affect how photos are displayed in photo windows and how they are exported. The initial defaults provide a good-quality display and relatively fast response. You can specify:

- n Size: To speed up the display in photo windows, choose a smaller default photo format. To improve the display quality, choose a larger default photo format.
- n Palette: To save time loading images, choose a smaller default palette. The palette is initially set to the maximum number of colors your monitor can display.
- n Changes made to the photo defaults take effect the next time you load a photo and do not affect currently loaded photo windows.

Exit

Ends the current session. Don't forget to copy your edit to the Clipboard or export it to a file before you exit.

Edit Menu



You can use Edit menu:

- 1.Undo Crop: undo the most recent crop action.
- 2.Copy: copy a photo to the Clipboard.
- 3.Select All: select all the photos on the current overview window.

Undo Crop

Cancel the recent crop action on the current photo.
Edit Undo Crop is unavailable until you crop a photo.

Copy

Puts a copy of the selected photo on the Clipboard using the colors (palette) and image size in pixels (resolution) that you have specified with File/Preferences or with the Colors and Size menus. If the photo is cropped, it is copied that way. When you copy a photo, the new photo replaces anything previously copied to the Clipboard.

When you copy a photo, Power Photo Software stores the instructions for creating a copy of the photo in one of the following formats:

device-independent bitmap (DIB),
bitmap,
picture (metafile).

Note: Some programs cannot accept images in these formats.

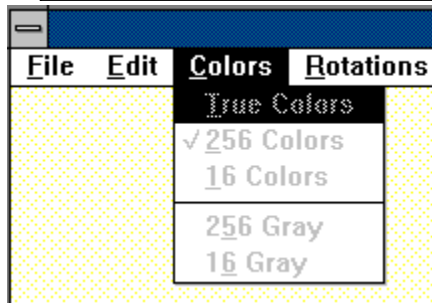
The copy operation actually occurs when you paste the photo into another application. Edit/Copy is fast, but there may be a short wait when you paste the photo. If you exit without pasting the copied photo, it is copied to the Clipboard before you exit. This may also cause a slight delay.

Edit/Copy is unavailable when you have either not selected a photo or have selected more than one photo.

Select All

Selects every photo in the active overview window for later export. Once you select all, the menu item will automatically become Unselect All, which unable you to select all photos.

Colors Menu



Use the Colors menu to specify the palette (number of colors or shades of gray); to display the currently selected photo(s) in the photo window(s); or to export the photo(s), overriding the default setting specified with File/Preferences. The Colors menu is unavailable when you haven't load a photo.

If your monitor is not capable of displaying the color range you selected, the graphics card must convert from the selected color range to the maximum range your monitor can display. This may result in slow display of the image.

When you change a photo's color range, only the colors of the pixels for the copy in memory are affected. The larger the number of colors you choose, the more memory the photo requires. It saves time an memory to choose a color range that is less than or equal to the color range your monitor is capable of displaying. You can specify a larger color range prior to copying to the Clipboard or exporting the image.

- [1. True Color.](#)
- [2. 256 Colors.](#)
- [3. 16 Colors.](#)
- [4. 256 shades gray.](#)
- [5. 16 gray.](#)

True Colors

Sets the color range to millions of colors (full 24-bit color) at which the selected photo(s) will be displayed, copied to the Clipboard, or exported to a file, overriding the default established by File/Preferences. This gives you millions of shades of colors. Full 24-bit color is RGB color. When you export a photo using millions of colors, all the color information stored on the Photo CD disc is preserved in the exported copy.

if your monitor is not capable of displaying 24-bit color (a VGA monitor cannot display millions of colors), your graphics card must convert from 24-bit color to the maximum palette you have. This may result in slow display of the image.

When you change a photo's color range, Power Photo Software changes the color of the pixels for the copy in memory. To change the palette, you must have the Photo CD disc in the CD-ROM drive. The larger the number of colors you choose, the more memory the photo requires.

256 Colors

Sets the color range to a balanced range of 256 colors at which the selected photo or photos will be displayed, copied to the Clipboard, or exported to a file, overriding the default established by File/Preferences.

When you change the palette of a photo, Power Photo Software changes the colors of the pixels for the copy in memory. To change the palette, you must have the Photo CD disc in the CD-ROM drive. Also, the larger the palette you choose, the more memory the photo requires.

16 Colors

Sets the color range to a balanced range of 16 colors at which the selected photo or photos will be displayed, copied to the Clipboard, or exported to a file, overriding the default established by File/Preferences.

When you change the palette of a photo, Power Photo Software changes the colors of the pixels for the copy in memory. To change the palette, you must have the Photo CD disc in the CD-ROM drive. Also, the larger the palette you choose, the more memory the photo requires.

256 shades of gray

Sets the color range to 256 evenly stepped shades of gray at which the selected photo or photos will be displayed, copied to the Clipboard, or exported to a file, overriding the default established by File/Preferences.

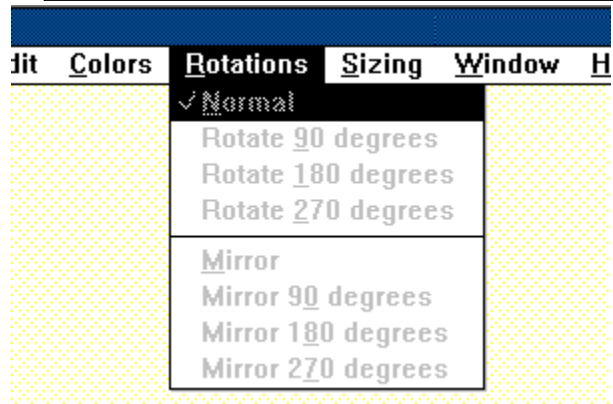
When you change the palette of a photo, Power Photo Software changes the colors of the pixels for the copy in memory. To change the palette, you must have the Photo CD disc in the CD-ROM drive. Also, the larger the palette you choose, the more memory the photo requires.

16 shades of gray

Paragraph Sets the color range to 16 evenly stepped shades of gray at which the selected photo or photos will be displayed, copied to the Clipboard, or exported to a file, overriding the default established by File/Preferences.

When you change the palette of a photo, Power Photo Software changes the colors of the pixels for the copy in memory. To change the palette, you must have the Photo CD disc in the CD-ROM drive. Also, the larger the palette you choose, the more memory the photo requires.

Rotation Menu

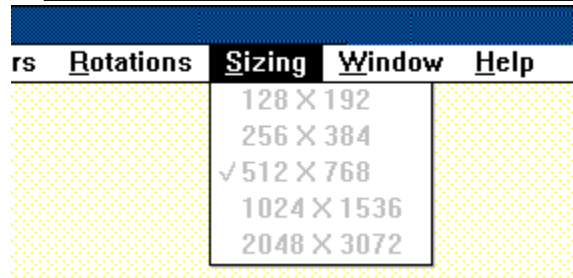


You can use Rotation Menu,

- n 1. Rotate photo 90 degrees clockwise.
- n 2. Rotate photo 180 degrees clockwise.
- n 3. Rotate photo 270 degrees clockwise. (90 degrees Counterclockwise).
- n 4. Make a mirror image of photos. (Reverses each selected photo along its vertical axis from side to side to produce the photo's mirror image)

To restore the original orientation, choose Normal.

Sizing Menu

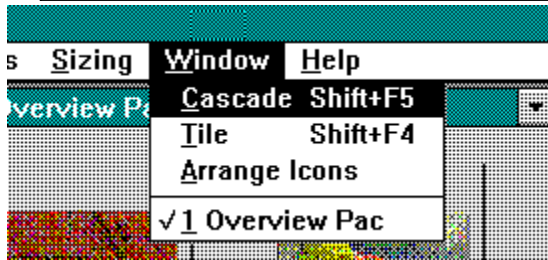


Use the Size menu to specify the resolution in pixels to display the currently selected photo(s) in the photo window(s) or to export the selected photo(s), overriding the default setting that you specified with File/Preferences. The Size menu is unavailable when you haven't selected a photo or photos. The various sizes are intended for different purposes:

- n 128 x 192 (Wallet) : for selecting and previewing.
- n 256 x 384 (Snapshot) :for low-resolution image manipulation.
- n 512 x 768 (Standard) : for moderate resolution (TV comparable).
- n 1024 x 1536 (Large) :for high-resolution image handling (HDTV).
- n 2048 x 3072 (Poster) :for photographic-quality printing and enlargement

When you choose a larger size, the photo is displayed using more pixels (and more memory) as if you had just obtained a larger negative from which to print a picture. Use the scroll bars to see areas of the photo that do not appear in the photo window.

Window Menu

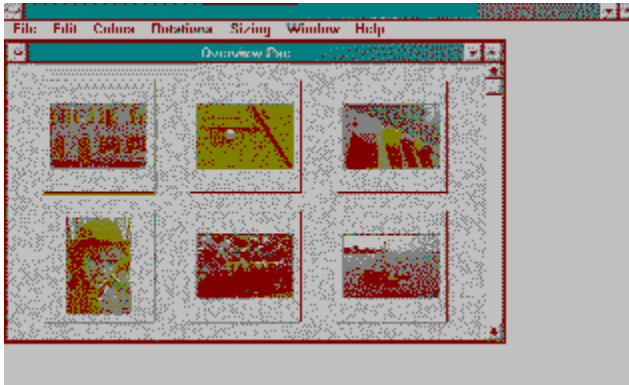


Use the Window menu to tailor the layout of windows and icons on the desktop, to see a list of the Power Photo Software windows, and to make a currently inactive open window active.

1. Cascade
2. Tile
3. Arrange Icons

To make one of the windows on the list active, click on the window name.

Overview Window



The overview window lets you look at many photos at one time in a small display format. When you choose File/Load overview, Power Photo Software creates a window that contains a small copy of every photo on your Photo CD disc. If all the photos do not fit on one screen, you can use the scroll bars to see the rest of the contact sheet.

You can control the colors (palette), the resolution (size in pixels), when it displays a new Overview window. Choose File Preferences to do this.

You use the Overview window to see all the photos on a Photo CD disc as a set, and select one or more photos with which you want to work.

Once you have selected a photo or group of photos, you can customize the color range, the resolution, and the orientation used to display or export the selection. It is more efficient to make changes in the Overview window before you display the selection in a photo window or set of photo windows.

Photo Window



The photo window displays a single photo using the color range (palette) and resolution (size in pixels) currently specified for the selected photo or photos.

You can open a photo window in several ways:

- n Double click a photo in the overview window
- n Choose File Load Photo and follow the prompts

You can control the color range, resolution, and orientation used to display the currently selected photo in a photo window (or the currently selected photos in individual photo windows) with the Colors, Size, and Orientation menus. Changes that you make through these menus apply only to the currently selected photos, locally overriding the default settings established by File Preferences.

Power Photo Software displays the photo in the photo window at the size you specified. The actual size of the photo window depends on the size of your screen pixels. If the photo is bigger than your screen, you can use the scroll bars to see the rest of the photo.

